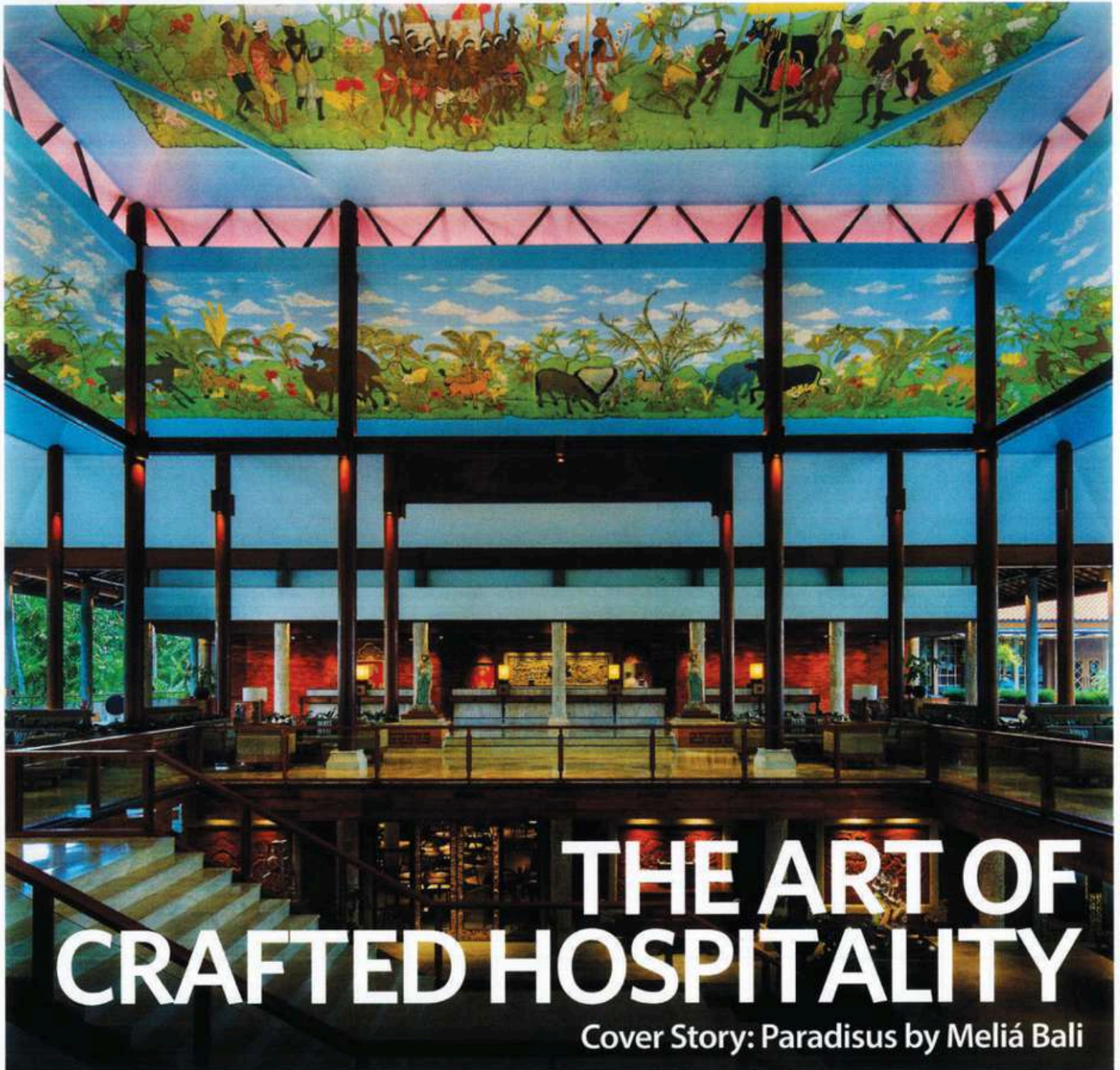


# iD INDONESIA DESIGN

VOL XXII NO. 108



## THE ART OF CRAFTED HOSPITALITY

Cover Story: Paradisus by Meliá Bali

RP 120.000 (JAVA & BALI), RP 125.000 (OTHER ISLANDS)  
USD 10.00 (U.S. & OTHER COUNTRIES)



# A Contemporary Reflection of the Capital

STORY BY Aulia R. Sungkar PHOTOS COURTESY OF The PuXuan Hotel and Spa, Beijing

There are hotels that impress, and then there are those that reshape how you experience a city. In Beijing, The PuXuan Hotel and Spa belongs to the latter. It does not compete with the city's grandeur. Instead, it offers a unique interpretation of the capital.

Located at the intersection of Wangfujing and Wusi Street within the Guardian Art Centre, the hotel is designed by Ole Scheeren as a dialogue between past and present. Its architecture responds to Beijing's layered history, which balances monumentality with intimacy. As we explore the property, we encounter not an isolated landmark, but a building embedded in the cultural fabric of the capital.





02

- 01 The calm and contemporary lobby lounge.
- 02 The lobby atrium, defined by light and symmetry.
- 03 Art that bridges heritage and modern expression.
- 04 The refined and understated lobby arrival
- 05 Fu Chun Ju, modern Chinese dining.



03



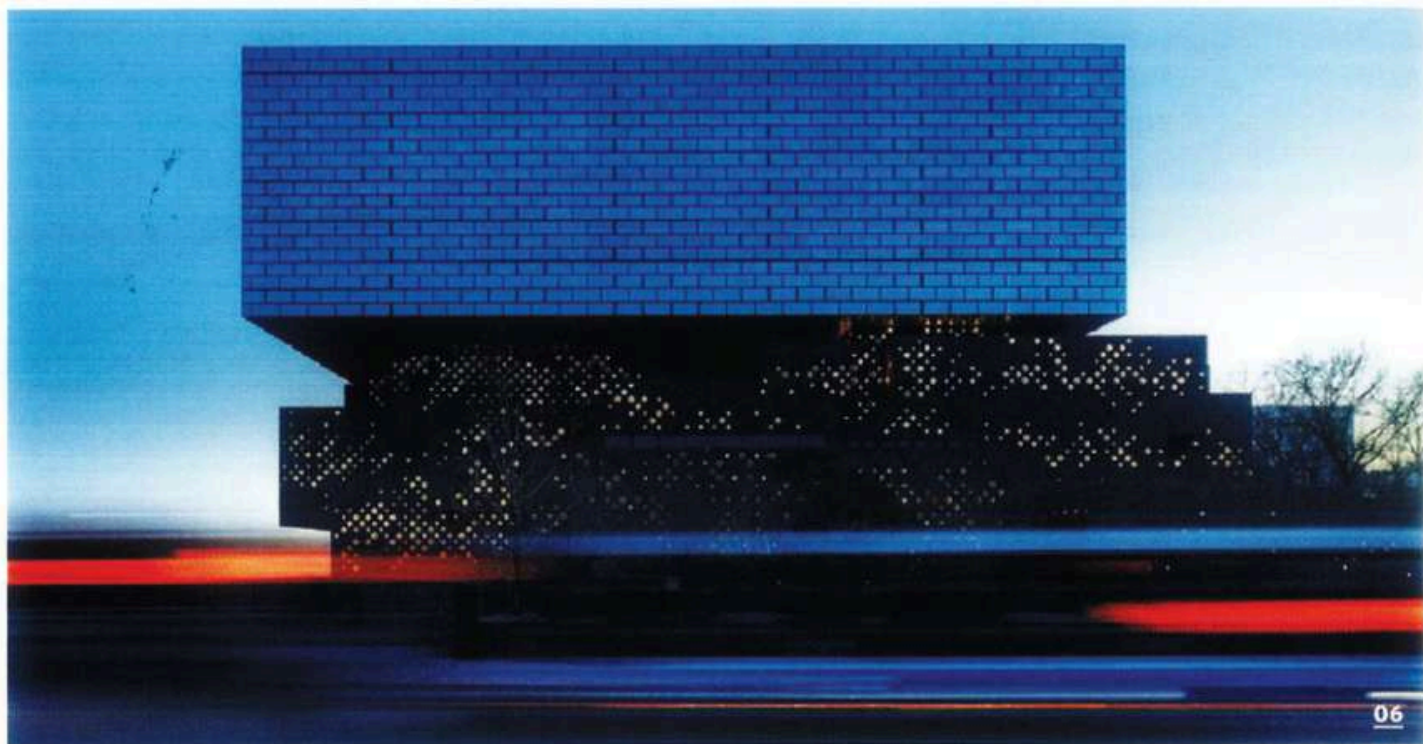
04



01



05



06

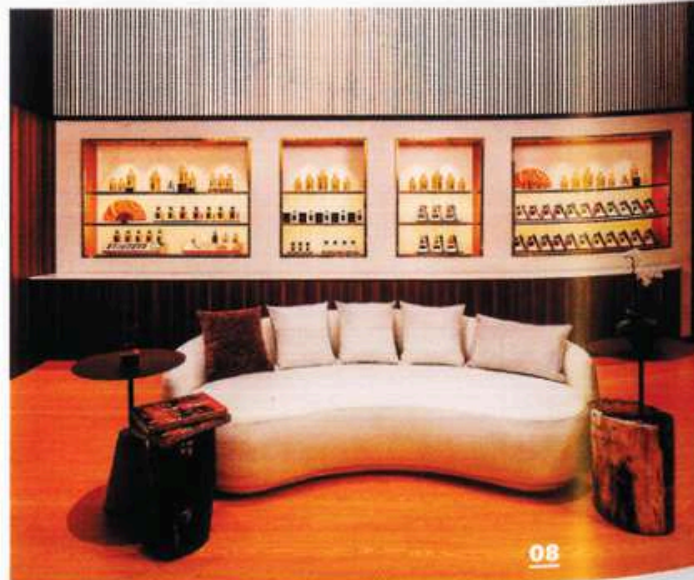
The arrival sequence sets the tone. Inspired by traditional hutong thresholds, you will notice sculptural elements that mark the transition into the hotel. Indeed, they echo a ritual of entry rooted in Beijing's domestic architecture. From here, the interiors unfold with quiet confidence. Designed by MQ Studio, the spaces favour materiality and proportion over spectacle. This integrates handcrafted furniture by SHANG XIA and bespoke lighting that subtly reference Chinese heritage. At its core lies a courtyard, a typology central to Beijing's architectural identity. It offers a moment of stillness within the city's intensity. Natural light, spatial clarity and restraint define the experience, allowing you to reconnect before re-engaging with the urban landscape.

The guestrooms continue this approach. With 92 rooms and 24 suites, the design prioritises clarity and comfort. Many rooms frame uninterrupted views of the Forbidden City, which anchor the contemporary experience within a historic context. Technology is harmoniously integrated, never overwhelming the sense of calm.

What distinguishes The PuXuan is its commitment to cultural immersion. Rather than isolating guests, it encourages exploration. Curated programmes guide you through hutongs, historic districts and lesser known parts of Beijing, offering a more nuanced understanding of the city.



07



08

This sensibility extends into its culinary offering. Rive Gauche boasts a refined interpretation of French dining within a dynamic and multi-layered space that blends restaurant, bar and art. Fu Chun Ju, led by Chef Waikit Yeung, offers a contemporary take on Cantonese cuisine, defined by precision and seasonality. Together, they reflect Beijing's evolving local and global identities.

Wellbeing is equally considered. The Guerlain Spa, the brand's first flagship in mainland China, offers tailored treatments that connect Parisian heritage with local context. In contrast,

the Tea Room provides a quieter experience, overlooking traditional neighbourhoods and inviting you to engage with the ritual of tea.

As part of The Leading Hotels of the World, The PuXuan achieves a rare balance. It meets global expectations of luxury whilst remaining deeply rooted in place.

In a city defined by contrast, The PuXuan does not resolve the tension between past and present. It gives it form, which allows you to experience Beijing not as a backdrop, but as a living narrative. **10**



09

- 06 The hotel exterior, a modern Beijing landmark.
- 07 Guerlain Spa terrace for a quiet escape.
- 08 The crafted and thoughtful display area.
- 09 The grand deluxe room, light-filled and serene.
- 10 The PuXuan Suite bathroom offers a calm atmosphere in marble.



10